

# METRO SQUARE

@ Bandar Petaling Jaya Selatan  
By ATLANTAMAS SDN BHD

Office | Retail | Entertainment | Shopping | Food & Beverage







# METRO SQUARE

Commercial ■ Retail ■ Dining

A new potential commercial centre comprising of 53 units of 2-storey shop office, specifically designed with a modern, contemporary concept and opens the door to a good investment opportunity.

Located in one of the most sought-after area in the vibrant Kuala Lumpur city with a good visible location fronting the busy New Pantai Expressway (NPE), METRO SQUARE is the perfect choice for those looking for high returns on their investment portfolio.

The upcoming shop office at METRO SQUARE is bound to be a new focus centre with much to offer in a matured township of Bandar Petaling Jaya Selatan.



## 2-Storey Shop Office

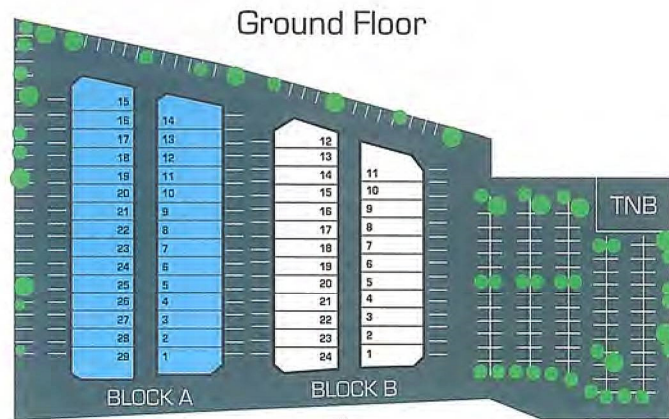
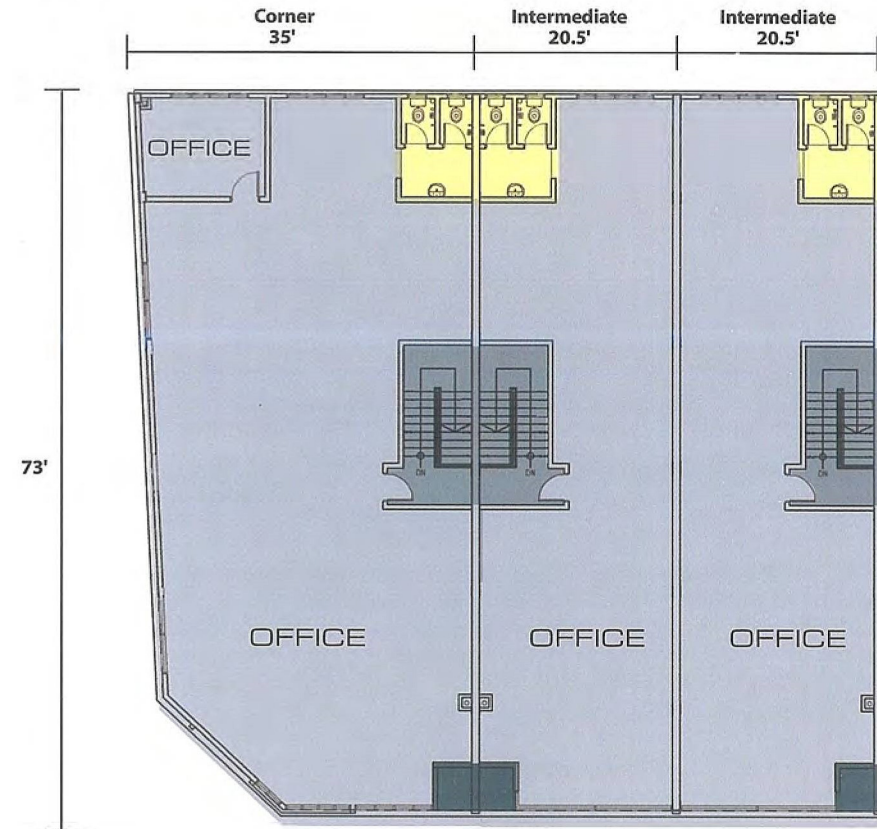
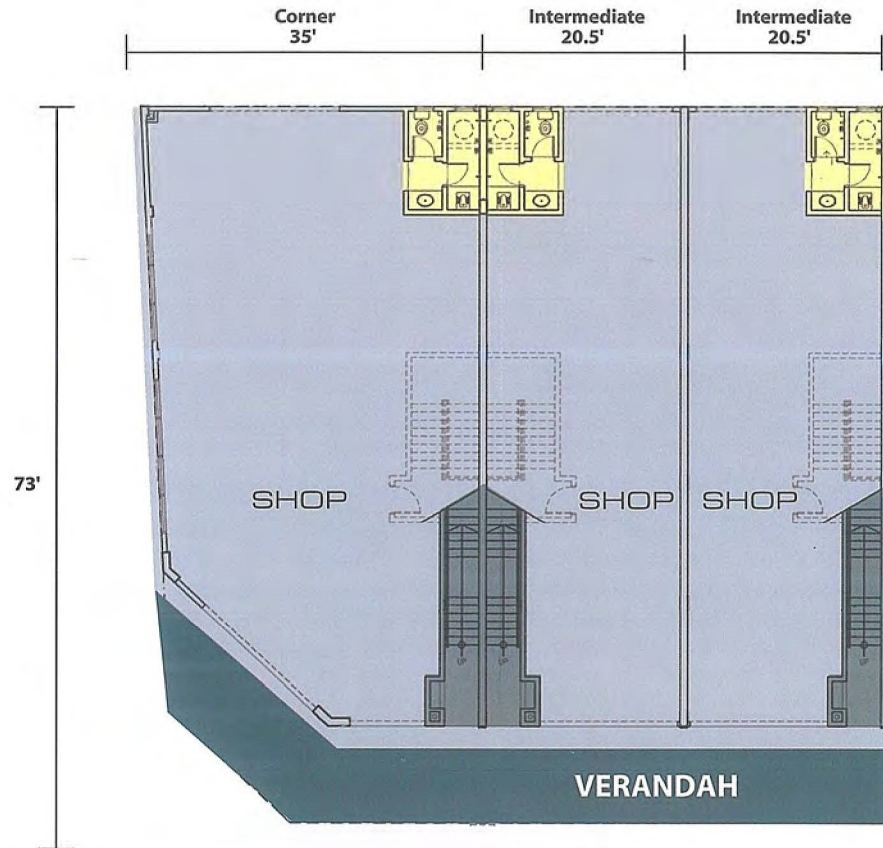
Corner Lot Size 35' x 73'

Intermediate Lot Size 20.5' x 73'



# FLOOR PLAN

Floor Height for Ground Floor 18ft



## MASTER PLAN

## First Floor SPECIFICATIONS

**Structure**  
Reinforced Concrete

**Walls**  
Masonry

**Roofing**  
Metal Roofing

**Ceiling**  
Skim Coat / Asbestos Free  
Cement Board

**Floor Finishes -**  
Shop  
Verandah  
Toilet  
Refuse Chamber  
Staircase

**Floor Finishes -**  
Office  
Air Cond Space

**Ground Floor**  
Cement Render  
Cement Render  
Quality Tiles  
Quality Tiles  
Quality Tiles

**First Floor**  
Cement Render  
Cement Render

Toilet  
Staircase

Quality Tiles  
Quality Tiles

**Wall Finishes**  
Toilet  
Refuse Chamber  
Others

Quality Tiles at 1500mm high  
Quality Tiles  
Plaster Finish with Paint

**Doors**  
Shop  
Office  
Toilet

Metal Roller Shutter  
Timber Door  
Timber Door

**Windows**  
Office  
Toilet

Aluminium Casement Window  
Aluminium Casement Window

**Sanitary**  
Squatting WC  
Pedestal WC  
Wash Basin



# LOCATION MAP



## YOUR EXCELLENT BUSINESS OPPORTUNITY

*For enquiries, kindly contact :*



*A prestigious development by :*

**ATLANTAMAS SDN BHD**

B-11-5, Megan Avenue II, No.12 Jalan Yap Kwan Seng, 50450 Kuala Lumpur.

Tel : 03-2166 0968 Fax : 03-2162 3936

[www.frankylnd.com.my](http://www.frankylnd.com.my)

All illustration and pictures provided herein are artist's impression. Dimensions and scales given are approximate only. While every care is taken in the materials preparation, the developer shall not be held liable for any inaccuracy in this brochure. The developer reserves the right to change or modify any parts of the project without notification in respect of any directive by architect and/ or relevant authorities.

Majlis Bandaraya Petaling Jaya Building Plan Approval No : MBPJ/120100/T/P10/1223/2008